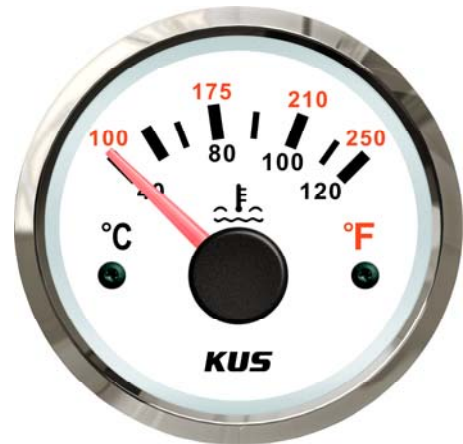
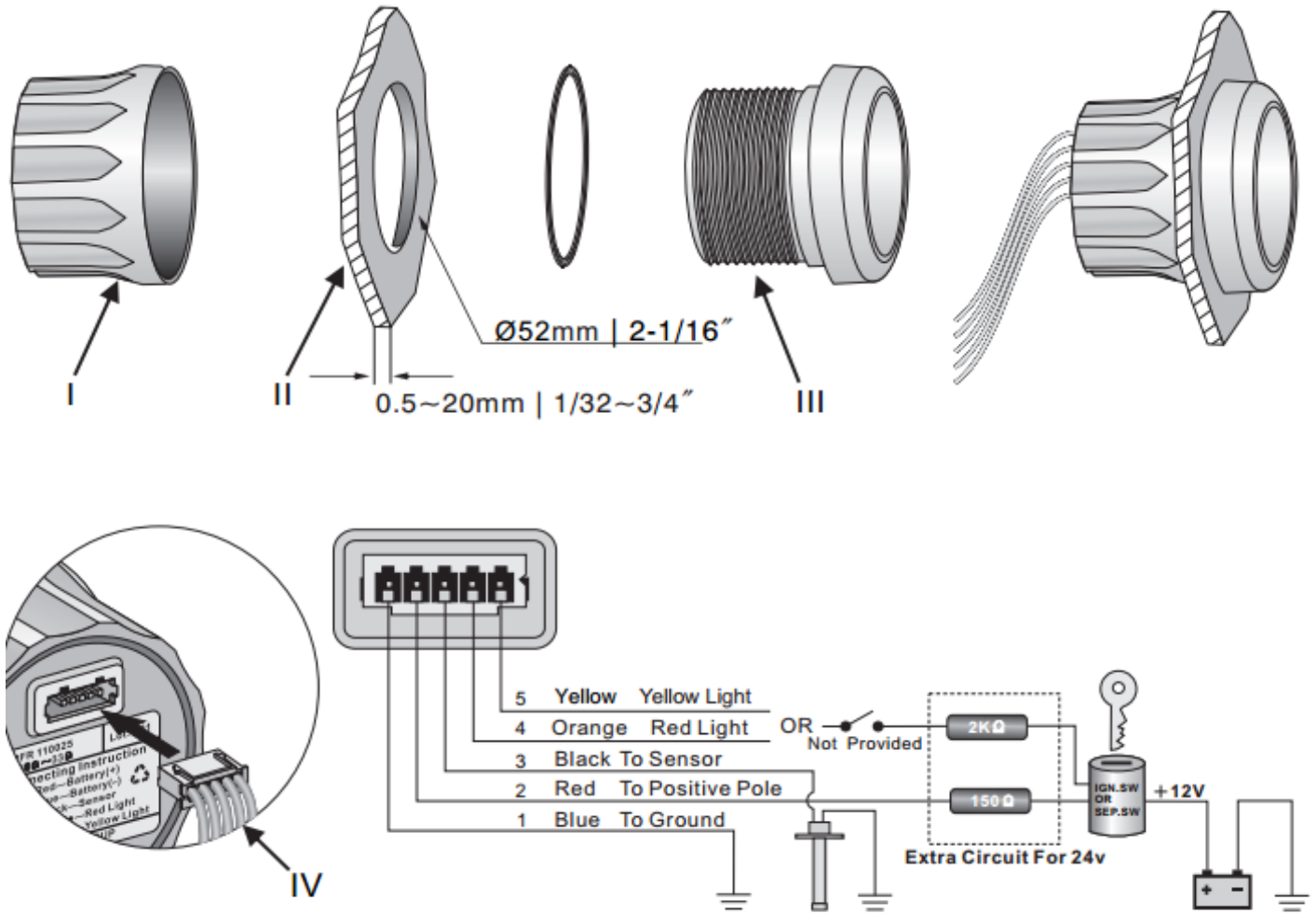


## Product Data Sheet



<b>Description:</b>	The Water Temperature Gauge allows the user to remotely monitor the engine's coolant temperature, ensuring it does not overheat, thus avoiding major and expensive damages to the engine.	
<b>Product Type:</b>	Water Temperature	
<b>Product Name:</b>	CPTR	
<b>Bezel:</b>	SS 316 Stainless Steel	Black or White Plastic
<b>Face Plate:</b>	Black	White
<b>Mounting Dimension:</b>	52mm, 2"	
<b>Protection Rating:</b>	IP 67 Front side, IP 65 Back side	
<b>Signal:</b>	Matched with KUS temperature sensor	
<b>Movement:</b>	Cross coil motor movement	
<b>Operation Temperature:</b>	-40°F ~ +185°F (-40°C ~ +85°C)	
<b>Operating Voltage:</b>	12VDC or 24VDC system.	
<b>Rated Power Draw:</b>	125mW	

## Installation Instructions



## INSTALLATION STEPS

1. Cut a 52mm (2 1/16") diameter panel hole (II). You will need a minimum clearance of 55mm (2 3/16") behind the panel to fit the gauge.
2. Remove fastening ring (I). There is an alignment tab on the gauge body (III), place the gauge in the panel hole and mark the position of this tab to correctly align the gauge.
3. Insert gauge through panel from the front, fit and tighten fastening ring (I) from the rear.
4. Connect wires according to wiring instruction. Note the use of dropping resistors for 24V circuit. Select either Orange or Yellow wires for backlighting. Wire colour corresponds with backlight colour.
5. Insert wire harness (IV) into port at the back of the gauge.
6. Please note, if the gauge is a voltmeter there is no black wire or resistors in the kit.